



# FX-CU V4.3 and FX Panel Firmware V4.3 Release Notes

## Content

Introduction	2
Operating system compatibility	2
What's new in this release	2
Issues fixed in this release	3
Software versions and compatibility	3
Installation and upgrade notes	4
FX-CU downgrade notes:	4
FX-CU Help	4
Installing FX-CU V4.3 and FX Panel Firmware V4.3	5
Known issues	9
Reminder of NFPA 72 testing requirements	15
Reminder of NFPA 720	15

## Contacting support

Contact Technical Support if you encounter any difficulties during this installation.

Kidde: Tel +1 888 244 9979

Fax +1 866 226 2126

[Kidde.techsupport@carrier.com](mailto:Kidde.techsupport@carrier.com)

<http://www.kidde-esfire.com/>

# Introduction

These release notes contain a summary of the changes included with FX-CU version 4.3.

Please read the release notes in their entirety to become familiar with new panel functionality and upgrade instructions.

## Operating system compatibility

The FX-CU V4.3 was tested and found compatible with the following Microsoft Windows operating systems: Windows 10 Professional, Windows 8.1 Professional, and Windows 7 Professional.

## What's new in this release

### What's new in this release.

Panel and CU Baud Rate option for SA-232 and SA-USB RS-232.

IPv4 Static and Dynamic DHCP and DNS IP Settings support.

IP receiver Sur-Gard with Fibro protocol support and new psuedo point events.

FireWorks and Sur-Gard support for Secondary Receiver.

CMS support for single medium or primary / backup mode options.

- Telco Only
- IP/Telco
- Telco/IP
- IP Only
- Telco and IP

Cybersecurity enhancements for encryption (CU/FUU panel communications), firewall, strong password policy/reset options for CU , and added security controls for the CU installation files.

Removed support for legacy iO64 and iO500 panels firmware V2.31 and earlier.

Added a new End-User License Agreement (EULA) to the CU installation.

FX-CU V4.3 adds support for the devices listed below.

Model	Description
SA-USB	The SA-USB Interface Card provides a USB connection to a supported printer or a connection to a PC. The card can be used for connecting a printer to the control panel to print system events. The card can also be used for PC communications, including the configuration utility (CU) and Firmware update utility (FUU).
SA-FSB	The SA-FSB field server bridge (FSB) provides a communication bridge between the FX life safety system and building management systems (BMS) by converting the control panel External Communications Protocol into supported serial and Ethernet protocols.

## Issues fixed in this release

QIT number	Description
47332231	Transmission Test Time is Inconsistent – ID 1750.
47263960	Panels programmed for Tx Test Frequency = 6 hours report once per minute – ID 1753.
47170423	FX AC Fail delay programmed as 3 hours reports to CMS with no delay – ID 1752.
47363547	SAS control panel date change using level 1 password can allow installer to modify level 2 password using a known password of the day – ID 1777.
46742767	SAS Dialer does not report Receiver Test Line 1 Trouble or Receiver Test Line 2 Trouble when one of the phone lines fails to connect to the CMS receiver for the dialer test signal – ID 691.
46909202	Cut Duration/Supervision – ID 614.
46949264	Auto Generation of Contact ID strings for CO Detection events is not consistent with the Ademco Contact ID Standard – ID 1755 and 1758.
47431544	When retrieving the database from a V2.xx series control panel the SAS CU V4.11 will default a panel configured for a daily test frequency of 1 to 24 – ID 1778.
47505299	Panel Gateway IP Address is changing upon writing to the panel (Mostly on CU) – ID 1816.
47368046	Some device CID events sent by SA-DACT to CMS receiver do not match the CU Dialer Report, and/or the CID events assigned at CU Device Configuration – ID 1755 and 1785.
46642894	FX-CU Panel Configuration report will not open in Microsoft Excel 2010 – ID 1820.
47226131	FX compatibility sheet shows Bosch IP receiver compatible – ID 1761.
47532022	FX Series control panel onboard notification appliance circuits fail to report trouble upon loss of supervision – ID 1887.

## Software versions and compatibility

### FX-CU database compatibility

FX-CU V4.3 can be used to generate databases for panels that use the following versions of firmware.

**Table 1: Panel firmware supported by FX-CU V4.3**

Version	Feature description
4.0/4.01	Four loop expansion with 1000 addressable devices and RZI16-2RS module support
4.1/4.1x	UL 864 10th Edition and CAN/ULC-S527, CAN/ULC-S559 features – Alarm ON functionality
4.11	RZI16-2RS module fix
4.2	Added support for new CO devices and FX-T3T4
4.3	Added Support for DHCP, USB, FSB, Sur-Gard Receivers  Panels with 2 loop FW version 2.X or lower are not supported by FX-CU version 4.30 or later. If you want to use the projects from older panels, make sure they upgraded/migrated from 2 loop panel to 4 loop models.

## To determine the firmware version on your panel:

1. Press the menu button, and then choose Reports.
2. Choose System Configuration.
3. Choose All.

Version is the first item listed after the time and date. It is listed in an XX.YY.ZZ format and Version 4.30.00 is equivalent to Version 4.3.

## Version 4.3 firmware compatibility

Panel firmware version 4.3 is not compatible with FX-CU 3.0, 3.1, 3.2, 3.31, 3.32, 3.4, 3.5, 4.0, 4.1, 4.11, or 4.2. If you have a panel with version 4.3 firmware, FX-CU version 4.3 or later is required.

Version 4.0 or later firmware is not compatible with old loop (SLC) cards. Your panel must have the FX-SLC1 or FX-SLC2 SLC interface cards installed.

## Upgrading on panel firmware versions 4.0, 4.01, 4.1, 4.11, and 4.2

Panels with firmware versions 4.0, 4.01, 4.1, 4.11, and 4.2 can be updated to version 4.3 using the Firmware Update Utility (FUU) version 4.3. For more information on using the FUU, refer to *Firmware Update Utility Release Notes* (P/N 3102144) and the FUU help.

## Installation and upgrade notes

We recommend that you do not manually delete your previous version of the FX-CU. Instead, let the installation program update that version to the current version.

The FX-CU is best run on a computer with a resolution of 1024 x 768 (or better) and small fonts. If any other settings are used, some of the FX-CU dialog boxes are resized and may not display properly.

## FX-CU downgrade notes:

**Note:** If you want a backup of projects added in newer versions of the FX-CU, then you should export the project files before downgrading the CU. Once the CU is upgraded back to the newer version, the exported project files can be imported.

Below are the steps to be followed to downgrade the FX-CU.

1. Uninstall the newer version of the FX-CU.
2. Delete the installation folder manually.
3. Install the older version of the FX-CU.

## FX-CU Help

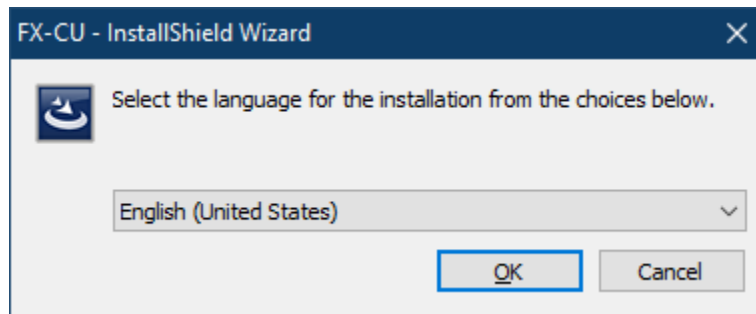
FX-CU Help requires that you have Internet Explorer 6.0 or later installed. The HTML help file is not compatible with other web browsers.

## Installing FX-CU V4.3 and FX Panel Firmware V4.3

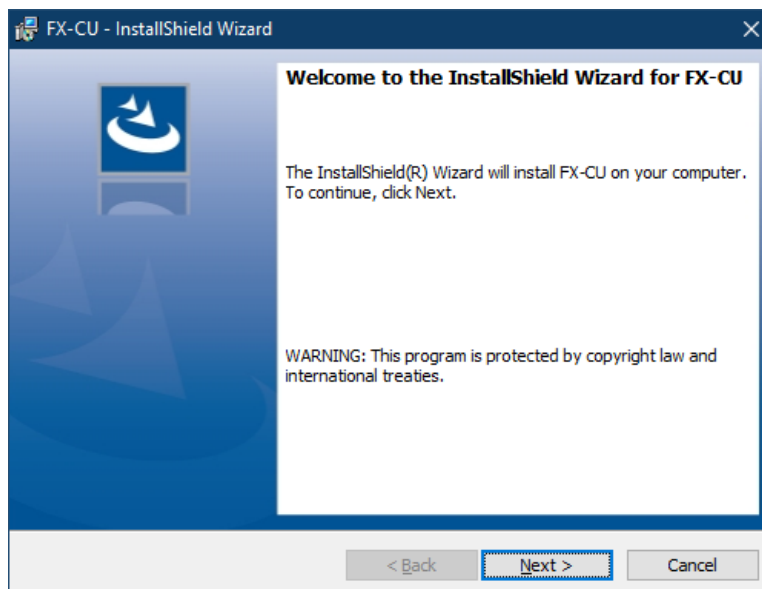
Follow the procedure below to install the configuration utility. You must have full administrator rights to install the configuration utility.

**Note:** Your FX-CU version number may be different.

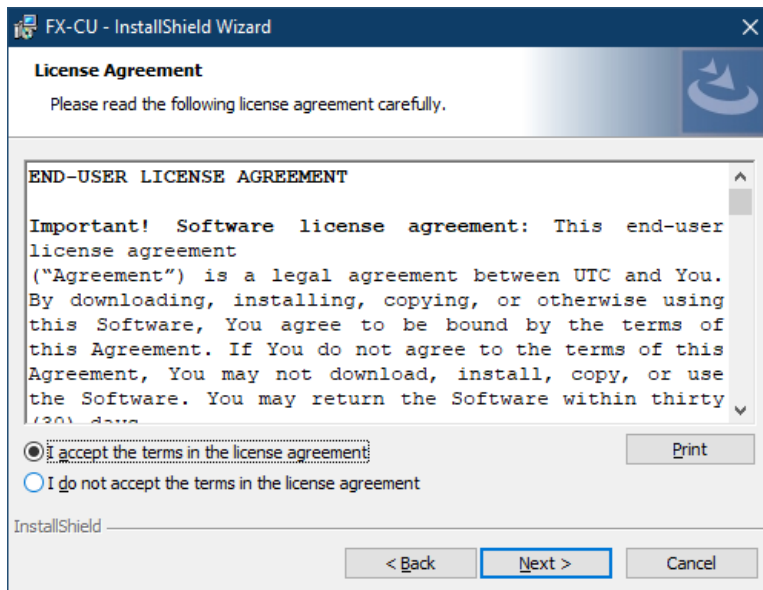
1. Right-click **FX-CU\_4.3 Setup.exe**, and then click **Run as administrator**.  
If asked whether you want this app to make changes to your computer, click **Yes**.
2. Select the language for installation, and then click **OK**.



3. Wait for the installation to initialize, and then click **Next**.

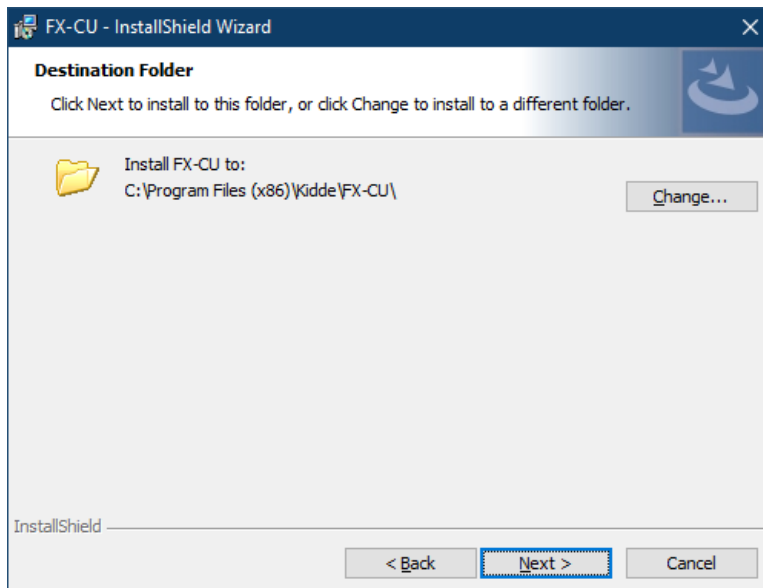


4. After carefully reading the End-User License Agreement, select the **I accept the terms in the license agreement** check box, and then click **Next**.

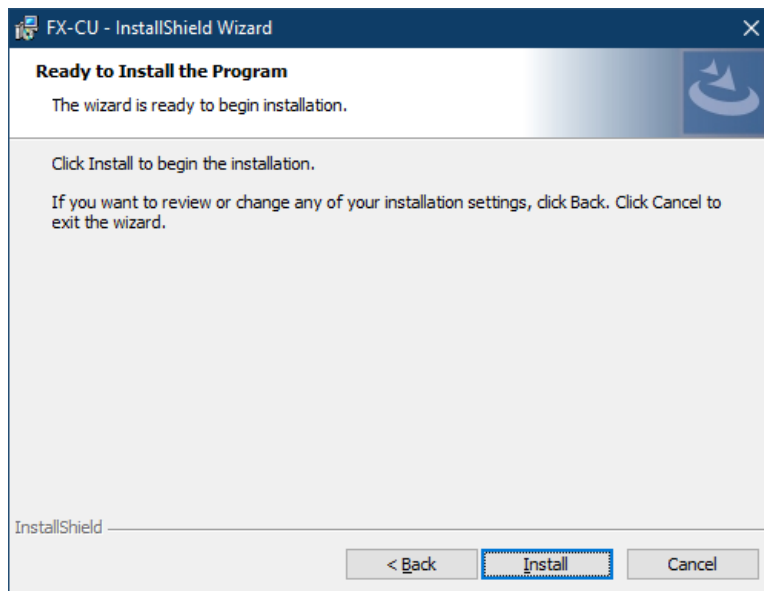


5. Select where you want to install the software, and then click **Next**.

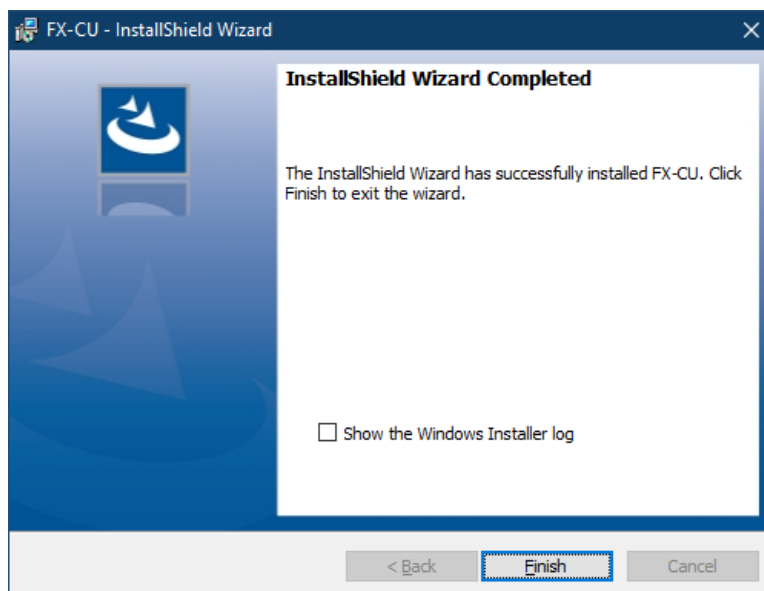
We recommend that you use the default location.



6. Select **Install**.

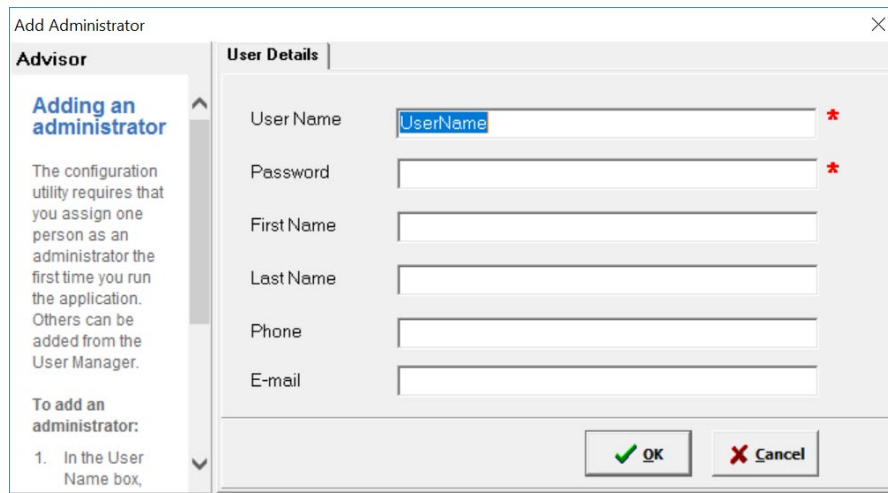


7. Wait while the setup wizard installs the configuration utility, and then click **Finish**.

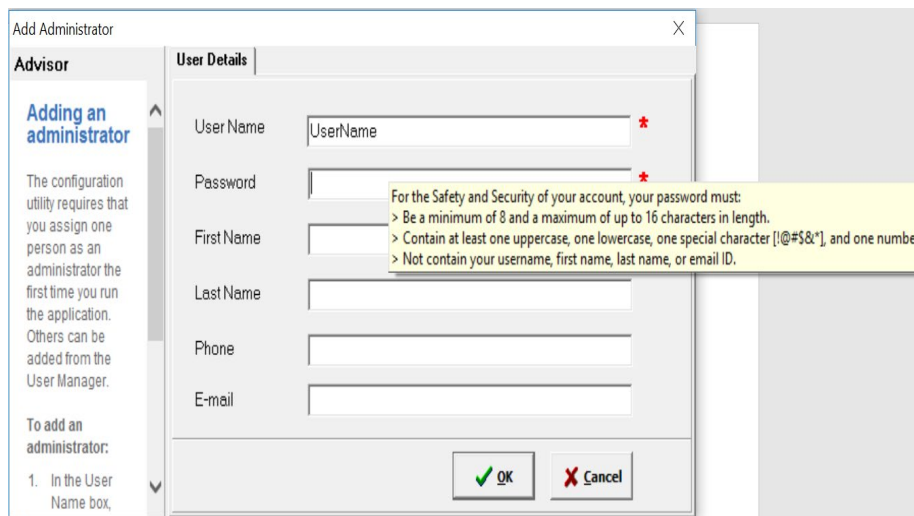


**Steps to set up Username and Password for the first time installation of the FX-CU.**

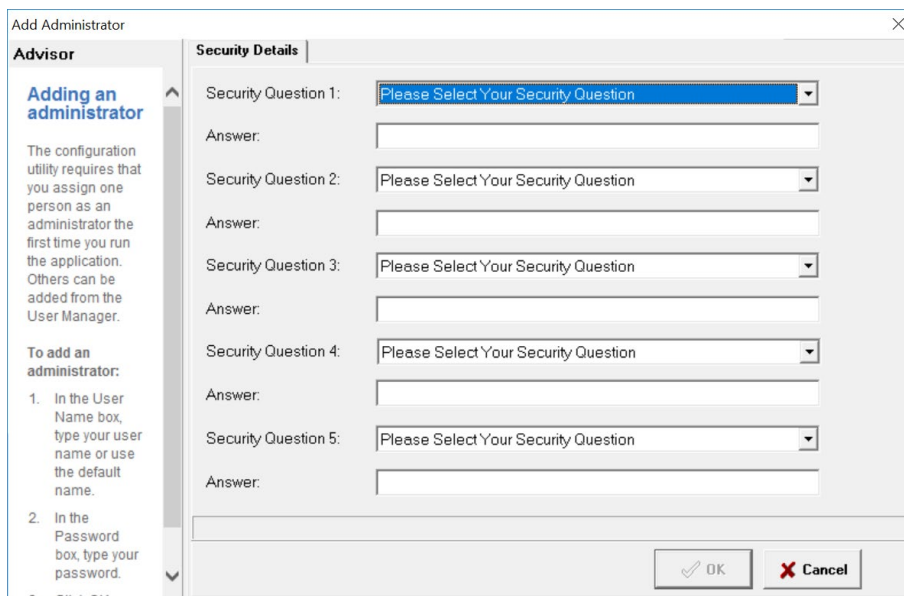
1. The Add Administrator window displays with User Details tab on click of Launch FX-CU Icon on desktop.



2. Provide a Username and Password which follows password policy and Click OK.



3. The Security Details tab is visible after providing user details.



4. Select 5 unique Security questions and update answers to the selected questions.

The screenshot shows a dialog box titled "Add Administrator" with a "Security Details" tab. On the left, there is an "Advisor" section with the heading "Adding an administrator" and a paragraph of text: "The configuration utility requires that you assign one person as an administrator the first time you run the application. Others can be added from the User Manager." Below this, it says "To add an administrator:" followed by a list of steps: "1. In the User Name box, type your user name or use the default name." and "2. In the Password box, type your password." At the bottom of the dialog, there are "OK" and "Cancel" buttons. The main area of the dialog is titled "Security Details" and contains five rows, each with a "Security Question" dropdown menu, an "Answer" text box, and a green checkmark icon. The questions and answers are: Security Question 1: "What was the make and model of your first car?" (Answer: Answer1), Security Question 2: "Who was your childhood hero?" (Answer: Answer2), Security Question 3: "What is your preferred musical genre?" (Answer: Answer3), Security Question 4: "What is the name of your favorite childhood friend?" (Answer: Answer4), and Security Question 5: "What was the name of your elementary / primary school?" (Answer: Answer5).

5. Click OK to complete the registration and launch the FX-CU application.

The panel date must match with CU/FUU date for successful communication.

## Known issues

### CMS Fireworks account configuration

Unique port number must be configured for every account which is configured as fireworks.

By default, the port number is 3061 and it must be updated to a unique port number when fireworks accounts are configured.

Duplicate port numbers are not accepted in fireworks accounts (Active or Inactive).

### Installing over FX-CU 3.0, 3.1, 3.2, 3.31, 3.32, 3.4, 3.5, 4.0, 4.1, 4.11, or 4.20

This installation will upgrade any previous installation of the FX-CU. The upgrade will not delete your projects. If you have a previous installation of the FX-CU, install FX-CU V4.3 into the same folder as the previous installation or you will not be able to see your existing projects.

FX-CU versions 3.5 and earlier installs in the C:\Program Files (x86) \GE\FX-CU folder.

FX-CU versions 4.0, 4.1, 4.11, 4.2, and 4.3 installs in the C:\Program Files (x86) \Kidde\FX-CU folder.

### FX-CU 4.2 Installation on Windows 10 Operating System

Windows 10 Portuguese, Spanish, and French operating systems do not allow installation of FX-CU 4.2.

### System Event Programming – Common Monitor

When utilizing the Common Monitor event in Correlation Group programming, outputs will not function properly if a delay is used. Do not use the Common Monitor event programming in a Correlation Group with a delay.

## **System Event Programming – Signal Silence**

When utilizing the Signal Silence event in Correlation Group programming, outputs will not function properly if a delay is used and the Auto Signal Silence feature is enabled (Panel Properties). Do not use the Signal Silence event programming in a Correlation Group with a delay and the Auto Signal Silence feature enabled.

### **FireWorks and FX panel backward compatibility**

- When using this product with FireWorks versions prior to 8.3, the receiver status point properties cannot be set.
- When using FireWorks version 8.1 with FX panel version 2.31, the following event type activations will be displayed on FireWorks, however the restorations of these event types will not. System Control must be restarted.

Common Supervisory, Waterflow, Common Monitor, CO Event, Ground Fault, Alarm On, Battery Low, AC Power, and Panel Silence

- When using FireWorks version 8.2 with FX panel version 4.XX, the following event type activation will be displayed on FireWorks, however the restorations of these event types will not. System Control must be restarted.
- Versions of FireWorks earlier than 8.2 have an issue when importing larger project databases.

If the database import fails to work with FireWorks, review all point labels and determine if you have duplicate labels. If so, modify the label to make each unique, and then attempt to import the project again into FireWorks.

### **Reports>System Configuration>Device**

When creating a device report using front panel programming, the panel UI does not list all of the IP account numbers associated with the device event. The configuration utility must be used to create correctly generated device reports.

### **Updating the configuration utility using a different language**

If you attempt to update the configuration utility using a different language setting, the installation dialog boxes will appear in the previous language. To prevent this, you must first uninstall the previous CU version before installing the new version.

### **Diagnostics Loop Comm Check**

When a Diagnostics > Loop Comm Check is executed from panel, diagnostics is performed on all four SLC loops regardless of if all loops are present on the system or not. The CU Status/Diagnostics windows displays "Query ready comm current test in operation" for the SLC loops not available on the system. This issue is not seen when all four SLC loops are present.

### **Configuring PreAlarm and Alt PreAlarm on supervisory devices**

In accordance with NPFA 72, 2013 edition, supervisory devices cannot be configured with PreAlarm or Alt PreAlarm. If supervisory devices were configured using PreAlarm or Alt PreAlarm in CU versions earlier than version 4.3, the selection will change to N/A when the database is imported into CU version 4.3.

**Dialer test time**

Dialer test time gets reset to a default value (00.11) when the date is changed while the system is running. Make sure to set the desired dialer test time and program the panel whenever a date change is done.

**Dialer fault**

Dialer Line-1 Fault is not cleared on Dialer configuration change from Dialer type Dual to Dialer type Single.

**Dialer message**

Dialer Normal/Abnormal Test Message is not captured for 2 hours on Dialer Line fault in history reports.

**SA-USB**

SA-USB card connected to Hyper Terminal; Panel printer mode needs to be set to Unsupervised Printer.

**Relay base Latched option**

The Latched option in device properties is applicable only for relay bases. For the base to stay latched during an activation, the base must be programmed as part of the correlation groups.

**Device test fire**

During test fire of devices with device type as “non latching,” it may not be possible to view the red LED activation on the device as the restoration happens immediately after the activation because of the non-latching property. Note that events are generated and processed as expected.

## Event reporting as Zone or Zone/Device

In panel configurations with event reporting as Zone or Zone/Device – if you attempt to program (configure/add/delete) the zones while a zone is in off normal state, it may result in the “common trouble” relay being latched on the panel even with no active trouble. In such situations, it is recommended to power cycle the panel to clear the latched state of the “common trouble” relay.

## Events reporting to Printer/FSB

The following events will *not* be sent to printer/FSB due to system limitations even if configured.

Test Fire

Clear History

Date and Time

Zone Test event

Unconfigured Trouble

Normal Test

Abnormal Test

IP Dialer Account 1 Normal Test

IP Dialer Account 2 Normal Test

IP Dialer Account 3 Normal Test

IP Dialer Account 4 Normal Test

IP Dialer Account 5 Normal Test

IP Dialer Account 6 Normal Test

IP Dialer Account 7 Normal Test

IP Dialer Account 8 Normal Test

IP Dialer Account 1 abnormal Test

IP Dialer Account 2 abnormal Test

IP Dialer Account 3 abnormal Test

IP Dialer Account 4 abnormal Test

IP Dialer Account 5 abnormal Test

IP Dialer Account 6 abnormal Test

IP Dialer Account 7 abnormal Test

IP Dialer Account 8 abnormal Test

Common Trouble Telco

Common Trouble Network

## CU Diagnostics window – Device History tab

In the CU Diagnostics window, under the Device History tab, the device events are represented with device status as trouble, fault, and normal. Since all off normal events are categorized in the trouble or fault category, for better clarity, more details and categories are required to describe the events. These updates to the CU will be implemented in the next release.

## Administrator login

The CU software should be installed and run as Administrator. When opening the CU software normally (not run as Administrator), the software does not save the username or password when closed.

## Importing of cross channel databases into FX-CU

Importing of cross channel (VS-CU, IO-CU) databases into FX-CU leads to access violation errors and the FX-CU will not work as expected.

## Device configuration

When device configuration is complete, you need to wait a minimum of thirty minutes to observe the device programming status on the panel display or you can connect to the CU to observe the status.

### Diagnostic Window - List Index out of bounds (2) due to migrating a 2-loop panel to a 4-loop.

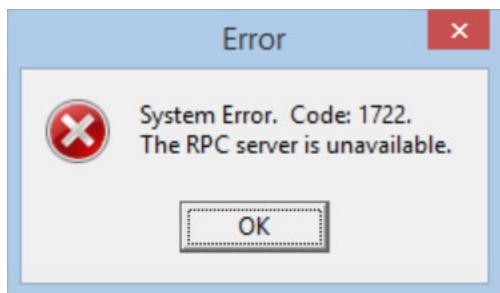
#### Solution:

1. Navigate to FX-CU installation path.  
Default installation path is C:\Program Files (x86)\Kidde\FX-CU
2. Open projects folder-> Navigate to project name and project version folders.
3. Look for Panel\_Name.DLP and Panel\_Name.DLS files, where Panel Name is the name of the panel where list index out of bound error appears.
4. Delete the files.
5. Open FX-CU and Read/Refresh Diagnostics data from panel.

#### What actions can be taken when there are system errors?

The FX-CU is a Windows-based application and in runtime the FX-CU application accesses many Windows system variables. Due to computer property issues, Windows services can sometimes be disabled making some of the FX-CU functions do not operate properly.

Example: Whenever there is a problem with the Windows Print Spooler the below system error displays when any of the FX-CU reports are generated.



In this case, it is recommended that the FX-CU application be closed, and then reopened for correct functionality.

#### Opening PDF file

When a report is opened in a PDF file from the FX-CU, the user will not be able to open another PDF file until it is closed in Windows 8.1 OS.

#### Multiple account configuration

Network account configuration is not visible for events, zones, device, loops.

#### Device Status Report – Active Supervisory event

When a PCD device's alternate device type (i.e. CO) is configured to CO Supervisory and device is put in acceleration mode, device status reports shows Active Supervisory event even though

Primary and Alternate device types are restored. This occurs only when both primary and alternate personalities are activated and restored. This supervisory event disappears from Device status report after some time, time it takes depends on the number of devices connected to panel. Also, this supervisory event disappears from device status report once acceleration mode is disabled.

### **Alarm events are not delivering within 70 seconds to DACT Receiver**

When reset operation is in progress, panel takes up to 73 seconds to deliver alarm events to the DACT receiver. This is observed when the Telco Dialer is configured with default settings.

### **Events not reporting on CMS Backup Path**

When CMS path is set to Telco/IP or IP/Telco, if the Primary path fails while delivering a specific event, the same event may or may not be reported on the Backup path because of timing in determining the Primary path fault. Subsequent events shall be reported on the Backup path once the Primary path fault is reported on the panel.

**Example:** CMS path is configured to Telco/IP. A detector reported an event and is configured to both IP and Telco accounts. The device event will be routed through the Primary path Telco. If Telco fails while delivering the trouble, same trouble will not be attempted to report through the Backup path IP. Once the panel reports the Primary path faults (Dialer line fault or Dialer Delivery failure fault), subsequent events will be reported through the Back path IP.

### **Enabling RS-232 Communication**

Before enabling RS-232 communication on panel to communicate with Configuration Utility, Printer/FSB device type must be set to 'None/FSCU'. Failing to set the Printer/FSB device type to 'None/FSCU' leads to Panel – Configuration Utility communication issues.

### **IP Dialer Delivering Normal (CID 602)/Abnormal (CID6 08) Events Twice**

When IP Dialer account N is configured to Sur-Gard and test mode is enabled, abnormal test event 608 or normal test event 602 will be delivered to the Sur-Gard receiver twice if same IP account N is enabled for IP Dialer abnormal/normal event notification. To report abnormal or normal event only once to the Sur-Gard receiver from IP account N, do not enable the same IP account N in the event notification of IP Dialer abnormal/normal events. N is IP account 1 to 8.

### **Telco Dialer line trouble does not report as per Configured Line Cut Duration**

With Line Cut Duration for lines 1 and 2 is set to the default setting of 120 seconds and when tested this configuration by removing the line 1 and line 2 from the SA-DACT, it detects the missing line 1 within 120 seconds, however it might take up to 190 seconds to detect missing line 2. In the cases where a 'Reset' operation is in progress, the panel configuration updates and there are active events to be delivered, the panel takes more than 190 seconds to report line 1 and line 2 troubles.

### **Dialer report displays the wrong information**

Event IDs are subject to change from release to release. For Event IDs corresponding to firmware version, please reference the technical reference manual of that specific version.

## **Panel allows mapping with no devices connected**

Currently, you can perform mapping with no detectors connected to the Panel. Mapping is supposed to be performed only when devices connected to panel.

## **Panel and Technical Reference Manual discrepancy in DHCP and DNS menu strings**

The panel firmware strings state Yes/No for configuring DHCP and DNS. The technical reference manual states Enable/Disable instead of Yes/No.

## **Panel and Technical Reference Manual discrepancy in Auto Programming menu**

Enable Net option is no longer part of Auto Program Menu. However, the technical reference manual still contains references to Enable Net option in Auto Program menu.

## **Panel and Technical Reference Manual discrepancy in Printer/FSB menu**

Set Printer/FSB type to FSB Unsupervised to communicate with the FSB is not listed in the technical reference manual in the printer programming section.

## **DHCP**

In certain networks, if the panel is unable to fetch the IP address automatically when DHCP mode is set to YES, it is recommended to set the mode as NO, and then set it back to YES.

## **DNS**

In certain networks, where DNS supervision is set to YES and if the panel frequently reports a supervision fault, it is recommended to set the supervision to NO.

## **Reminder of NFPA 72 testing requirements**

When changes are made to site-specific software, the following shall apply:

- All functions known to be affected by the change, or identified by a means that indicates changes, shall be 100 percent tested.
- In addition, 10 percent of initiating devices that are not directly affected by the change, up to a maximum of 50 devices, also shall be tested and correct system operation shall be verified.
- A revised record of completion in accordance with NFPA standards shall be prepared to reflect these changes.

Changes to all control units connected or controlled by the system executive software shall require a 10 percent functional test of the system, including a test of at least one device on each input and output circuit to verify critical system functions such as notification appliances, control functions, and off-premises reporting.

## **Reminder of NFPA 720**

Installation, location, performance, inspection, testing, and maintenance of carbon monoxide detection and warning equipment shall be in accordance with the requirements in NFPA 720 *Standard for the Installation of Carbon Monoxide (CO) Detection and Warning Equipment – 2012*.